

FED. ROAD DIST. NO.	STATE	U.S.W.P.F.R. PROJ. NO.	FISCAL YEAR	SHEET NO.	TOTAL SHEETS
9	MAINE	10			4

STATE OF MAINE STATE HIGHWAY COMMISSION

PLAN AND PROFILE

LORD BRIDGE OVER MARSH STREAM **FRANKFORT & MONROE**

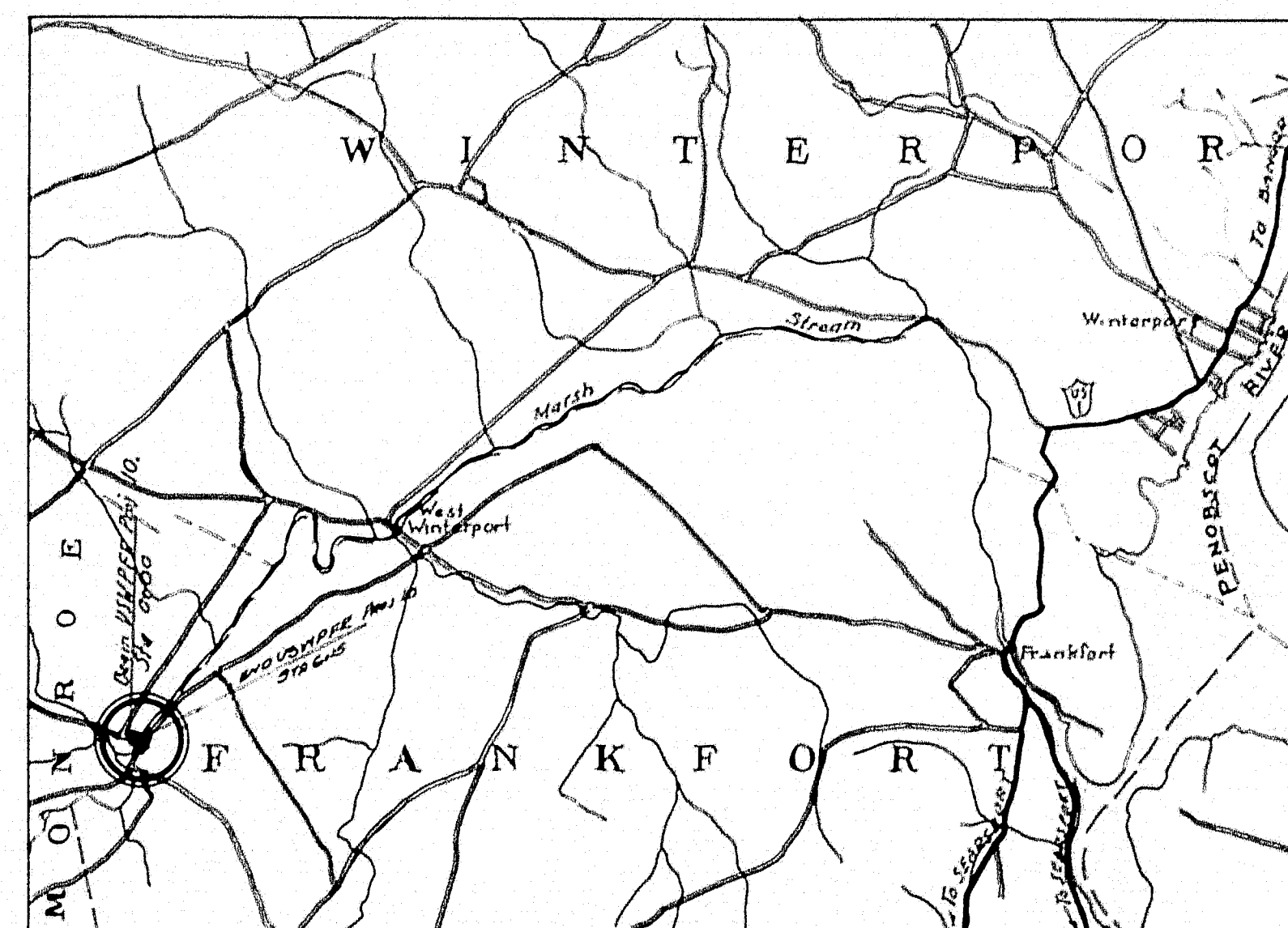
WALDO COUNTY
U.S.W.P.F.R. PROJECT NO. 10.
TOTAL LENGTH 0.116 MILES

CONVENTIONAL SIGNS

STATE OR NATIONAL LINE	—————	SURVEY LINE	———x———
COUNTY LINE	—————	CULVERT	———x———
TOWN LINE	—————	DROP INLET	———x———
UNFENCED PROPERTY	—————	TROLLEY POLE	———x———
FENCE	—————	POWER POLE	———x———
RIGHT OF WAY LINE	—————	TEL. POLE	———x———
TRAVELED WAY	—————	MARSH	———x———
RAILROAD	—————	TREES	———x———
RETAINING WALL	—————	STONE WALL	———x———

INDEX OF SHEETS

SHEET NO. 1	SURVEY
SHEET NO. 2	ABUTMENT PLANS
SHEET NO. 3	STEEL DETAILS
SHEET NO. 4	FLOOR DETAILS
SHEET NO.	
SHEET NO.	



LOCATION MAP
TRACED FROM U.S.G.S. BUCKSPORT SHEET
SCALE 62,500

APPROVED:
MAINE STATE HIGHWAY COMMISSION

Paul C. Durbin
CHAIRMAN

Harwood Sisson

—————

Heinrich D. Barrow
CHIEF ENGINEER

APPROVED:
U. S. BUREAU OF PUBLIC ROADS

—————
DISTRICT ENGINEER

—————
CHIEF ENGINEER

—————

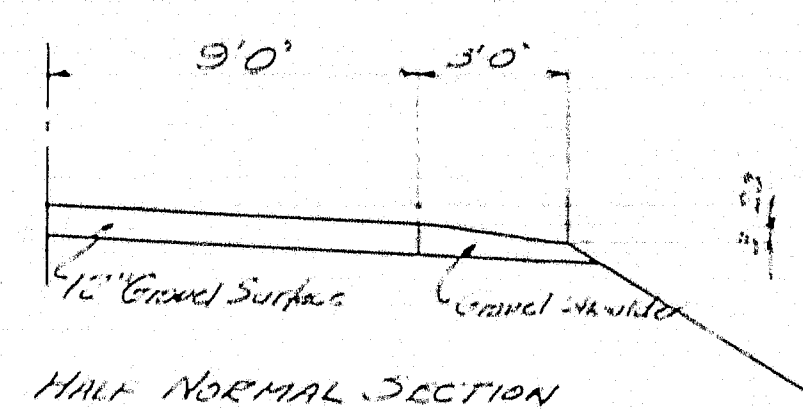
—————
DIRECTOR

SUBSTRUCTURE
 Abutments of split stone. Stone well cut and placed, need repointing. Abut 1 7 courses of average 20". No headers above 4th course. Rest on footing. Abut 2 8 18 1/2" (Average) Courses. No footing in sight.

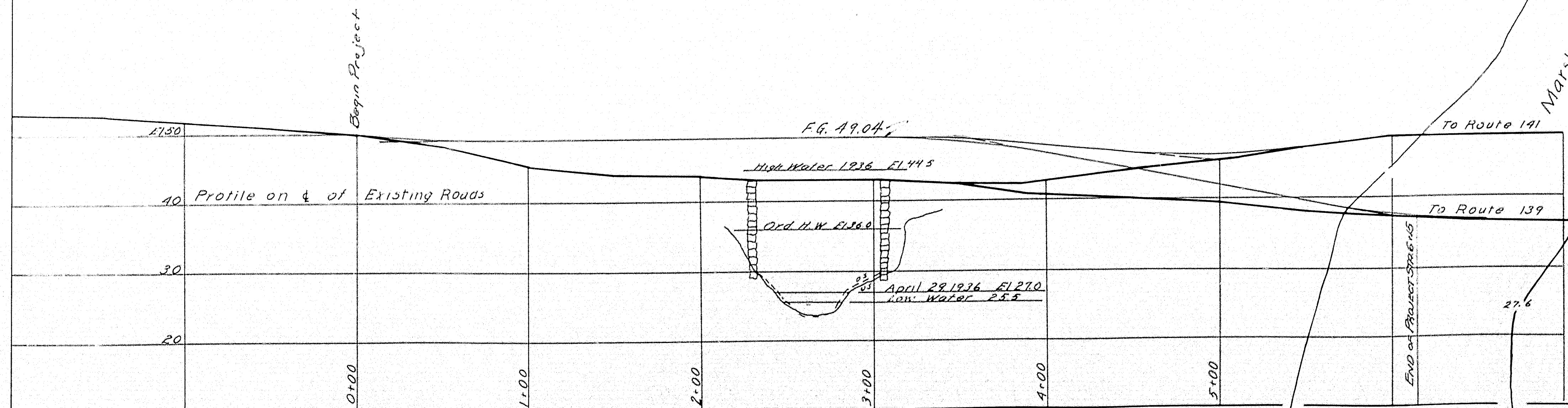
SUPERSTRUCTURE:
 75' Pony truss built by Penn Bridge Co about 1910. Bottom chord U.S. badly damaged by ice. Several I beam stringers bent. Trusses in poor condition. Floor system good.

STREAM
 Swift current.

FOUNDATION
 Boulders and large rocks. No penetration over 1.5'.



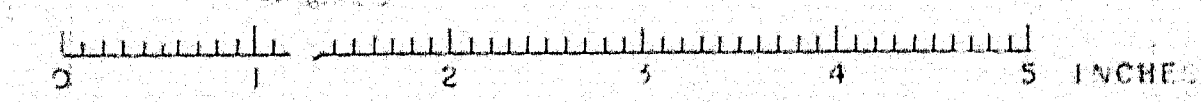
Plan 1" = 30'
 Profile 1" = 40'
 V 1" = 10'



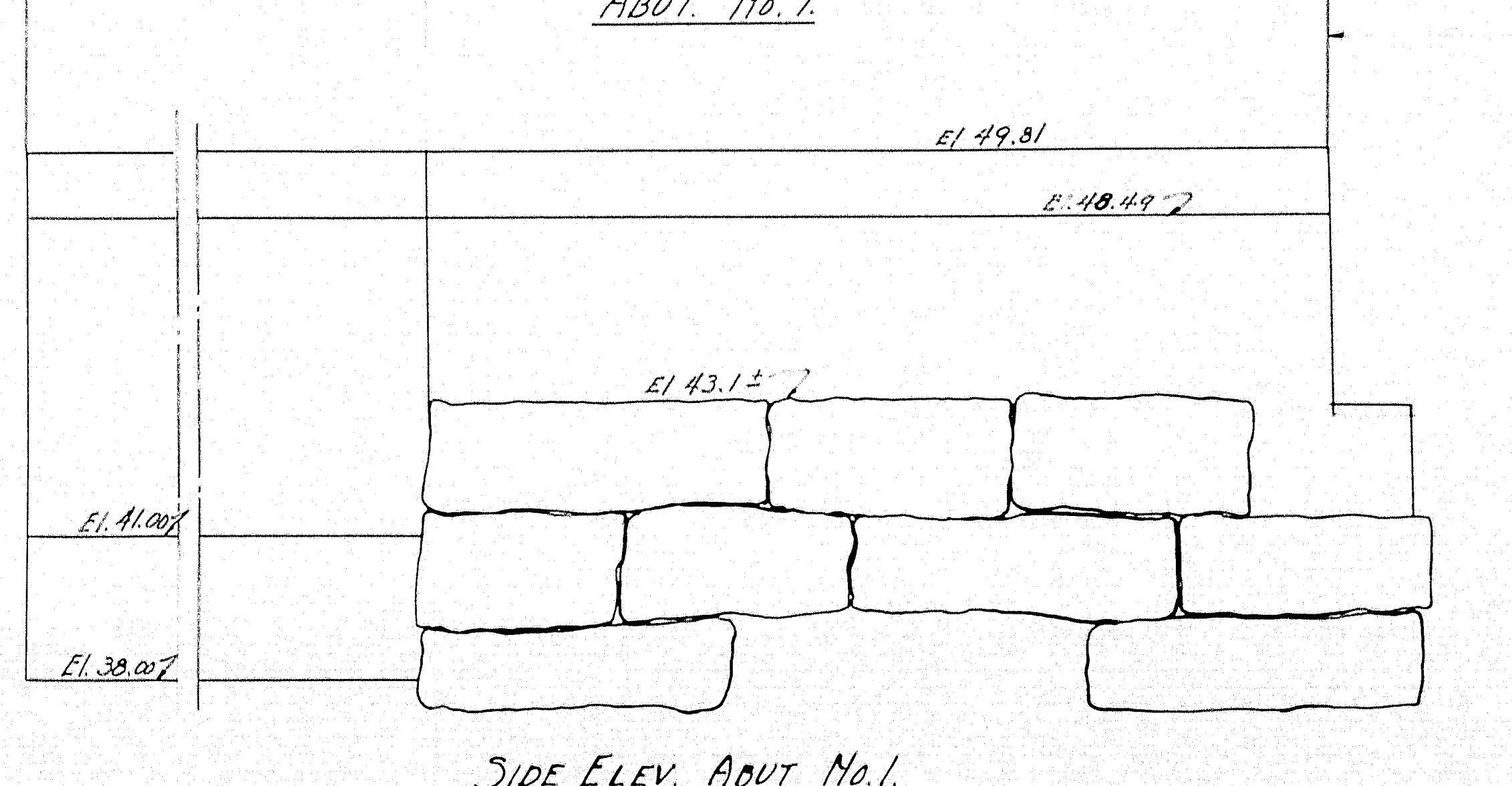
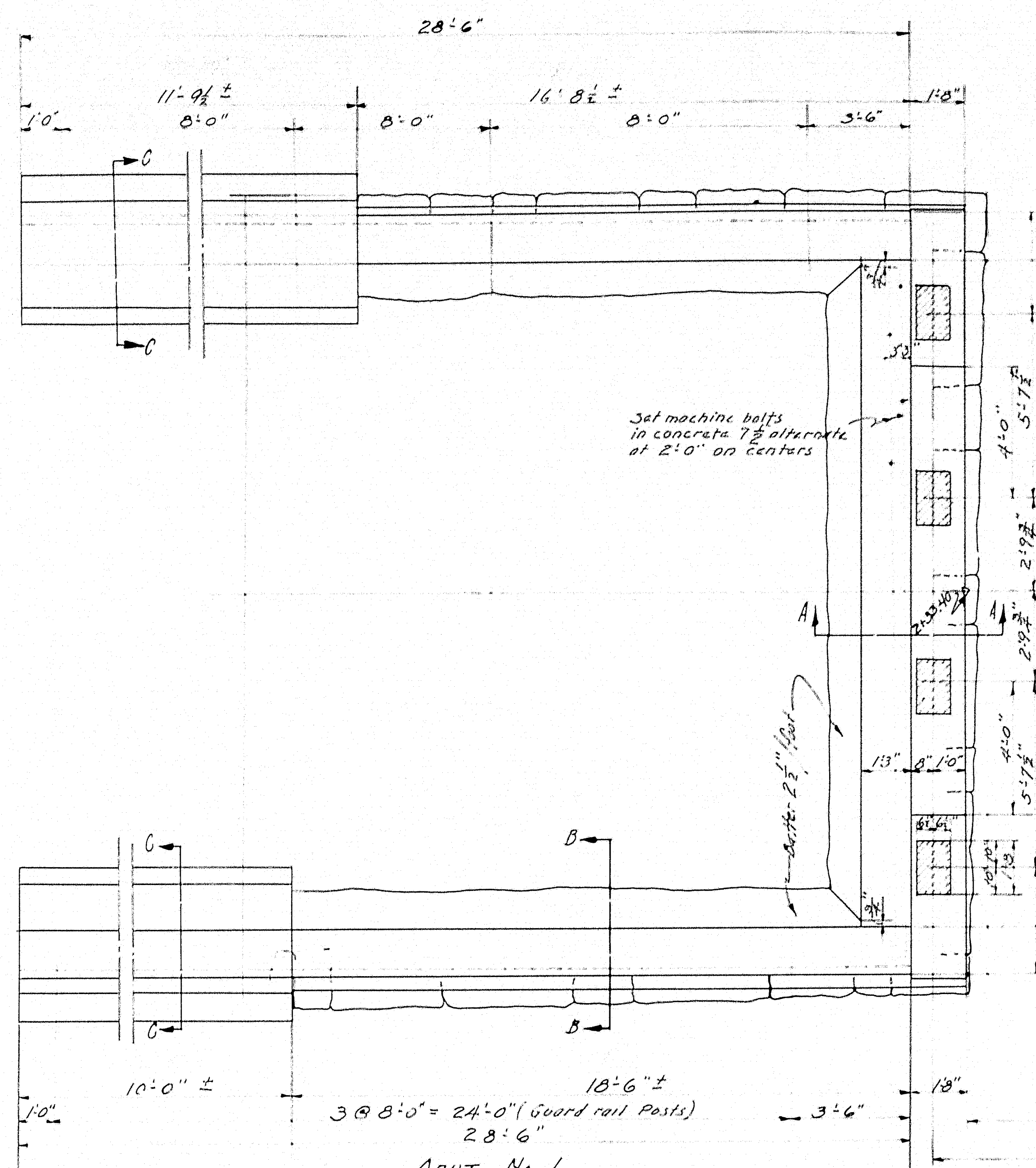
TOWN 14-05
 BRIDGE 334B

STATE HIGHWAY COMMISSION
 BRIDGE DIVISION
 LORD BRIDGE
 MARSH STREAM
 BETWEEN THE TOWNS OF
 FRANKFORT AND MONROE
 WALDO COUNTY
 SURVEY

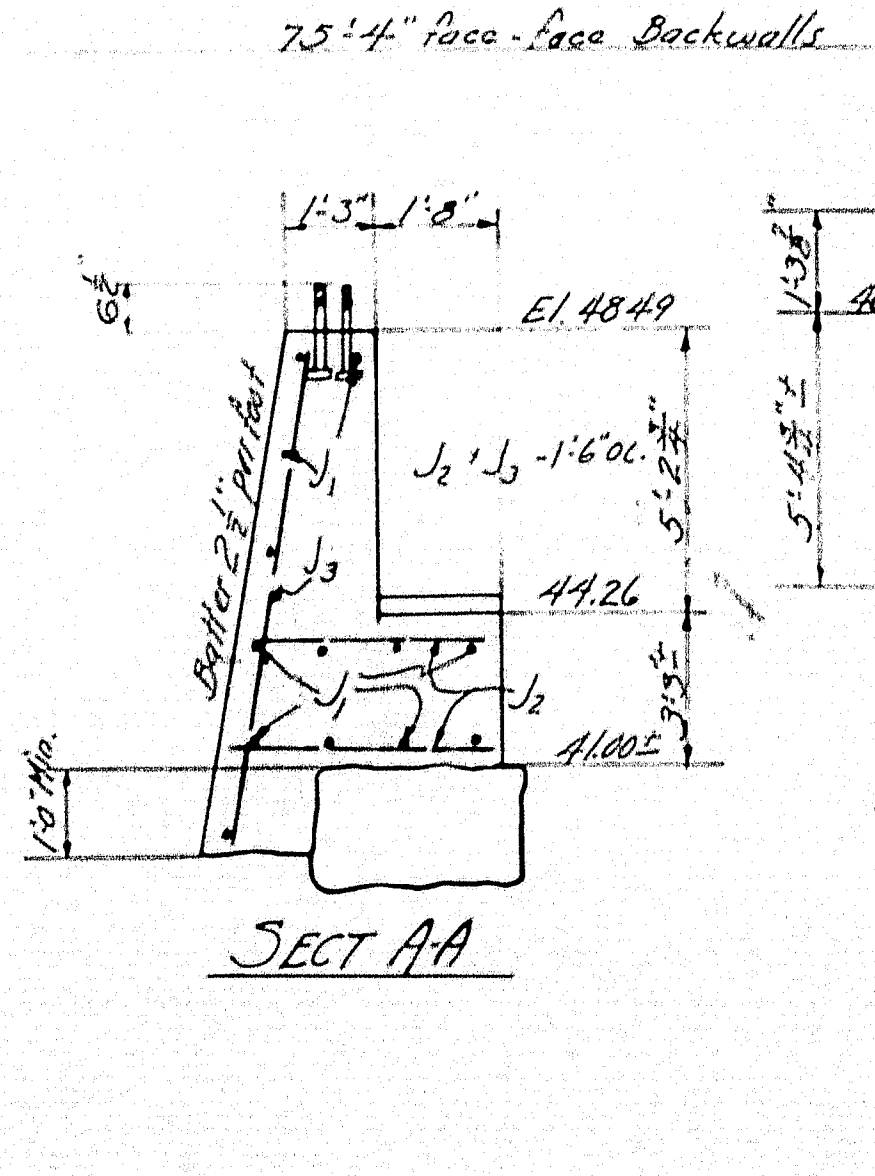
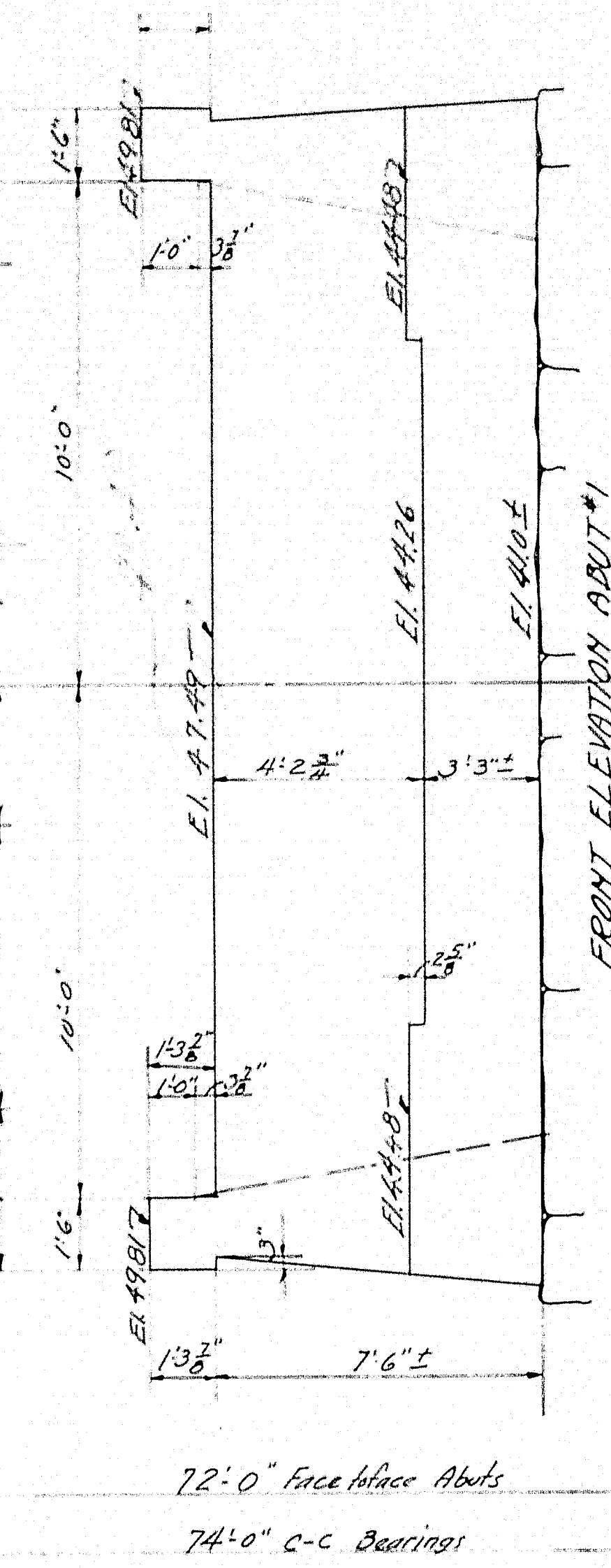
SHEET 1 OF 4 AUGUSTA, ME MAY 6, 1936



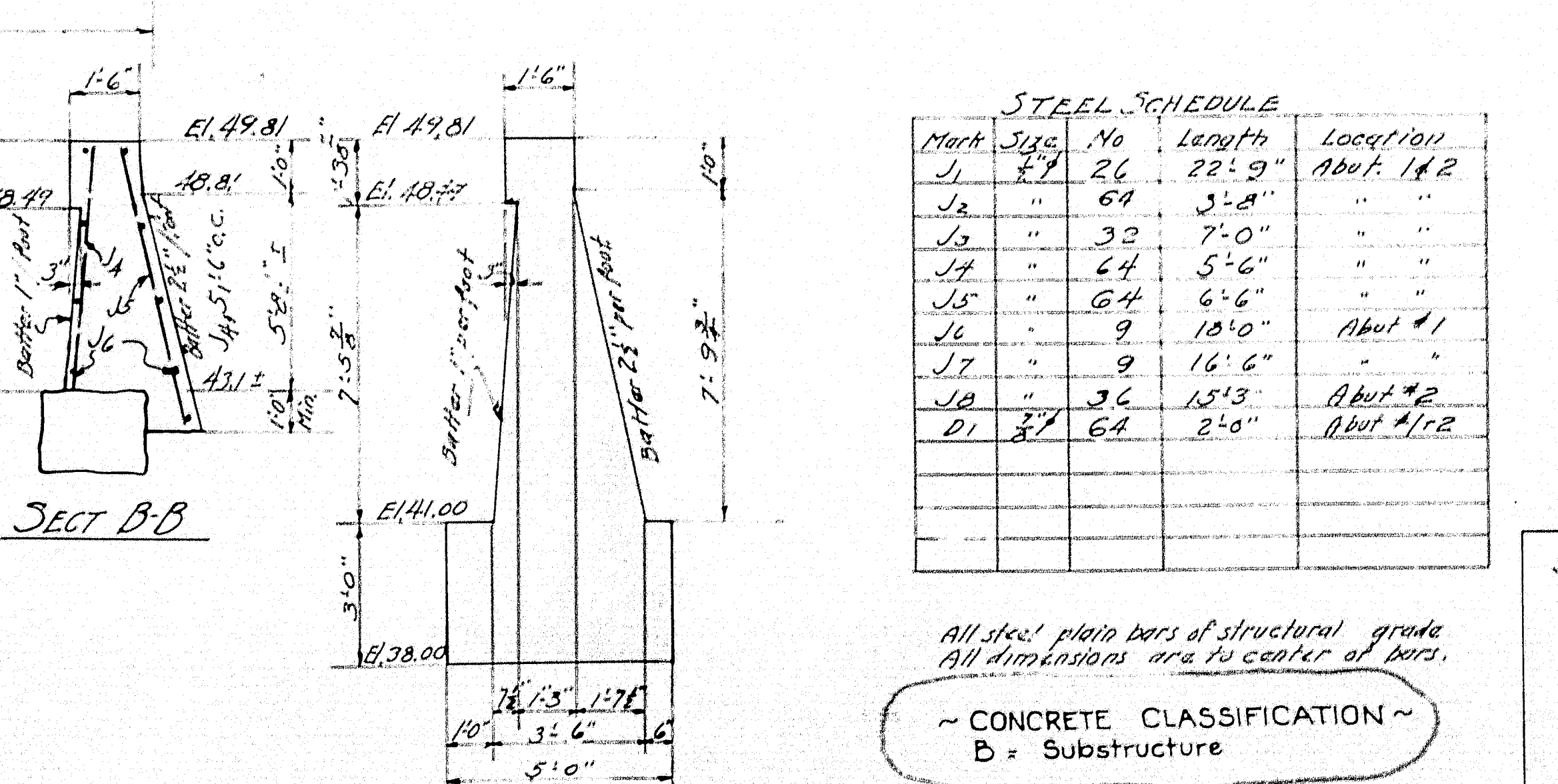
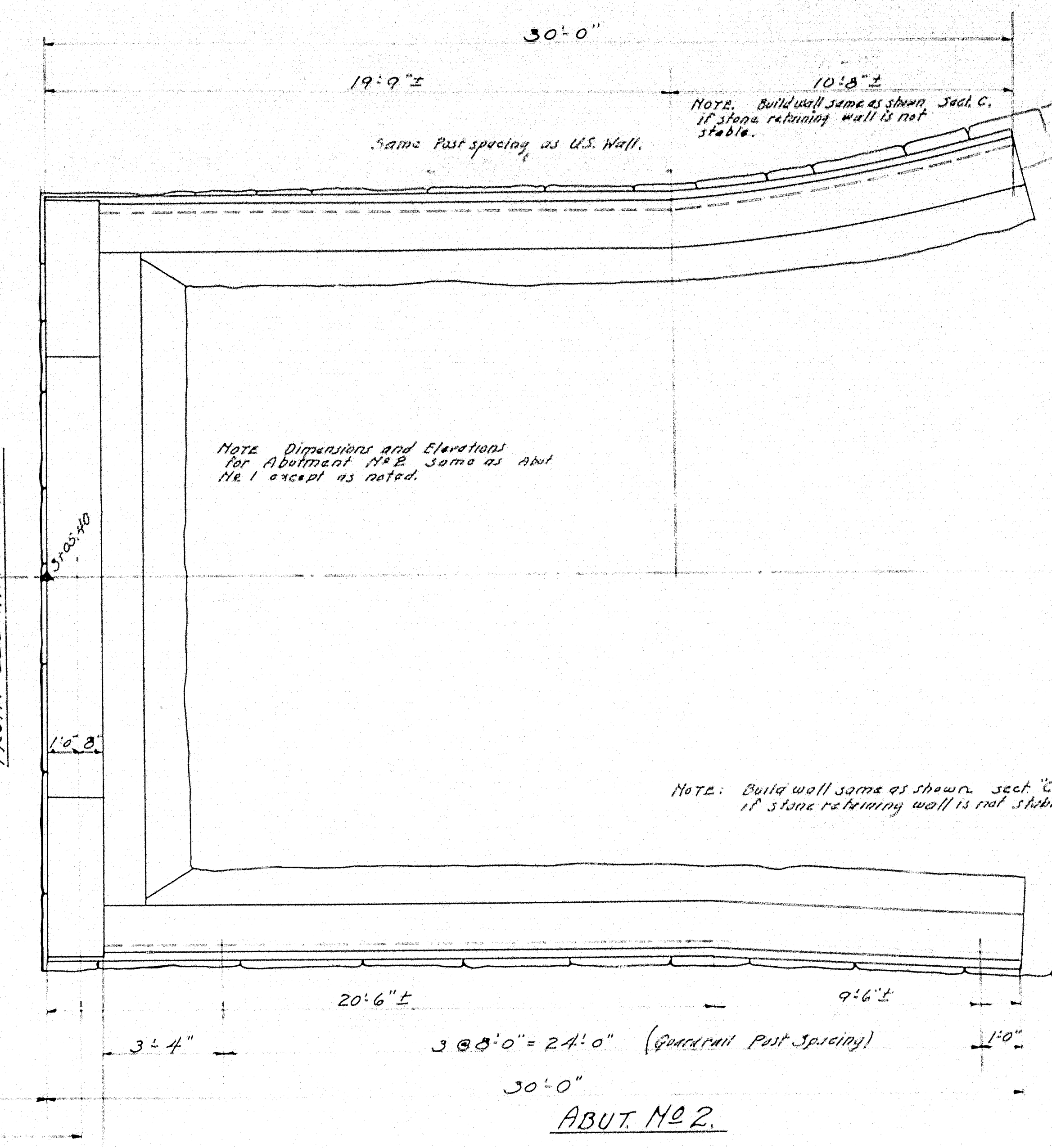
Survey - Spalding
 Plotted - 1936



SIDE ELEV. ABUT. NO. 1.



SECTION AA
SECTION BB

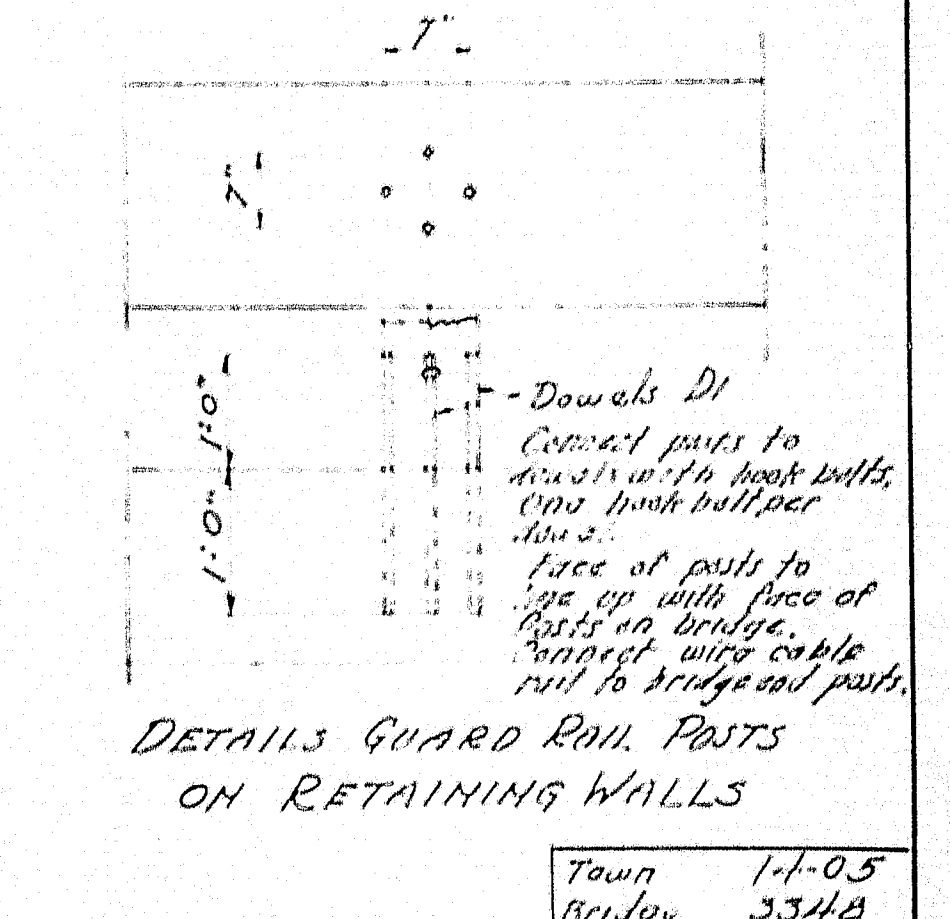


SIDE ELEV. ABUT. NO. 2.

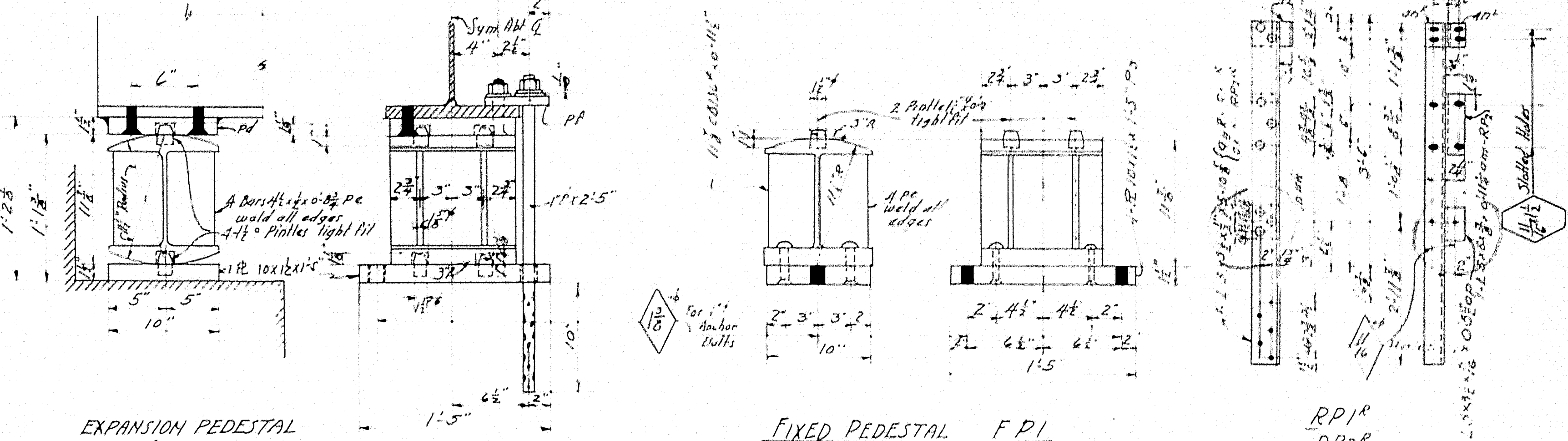
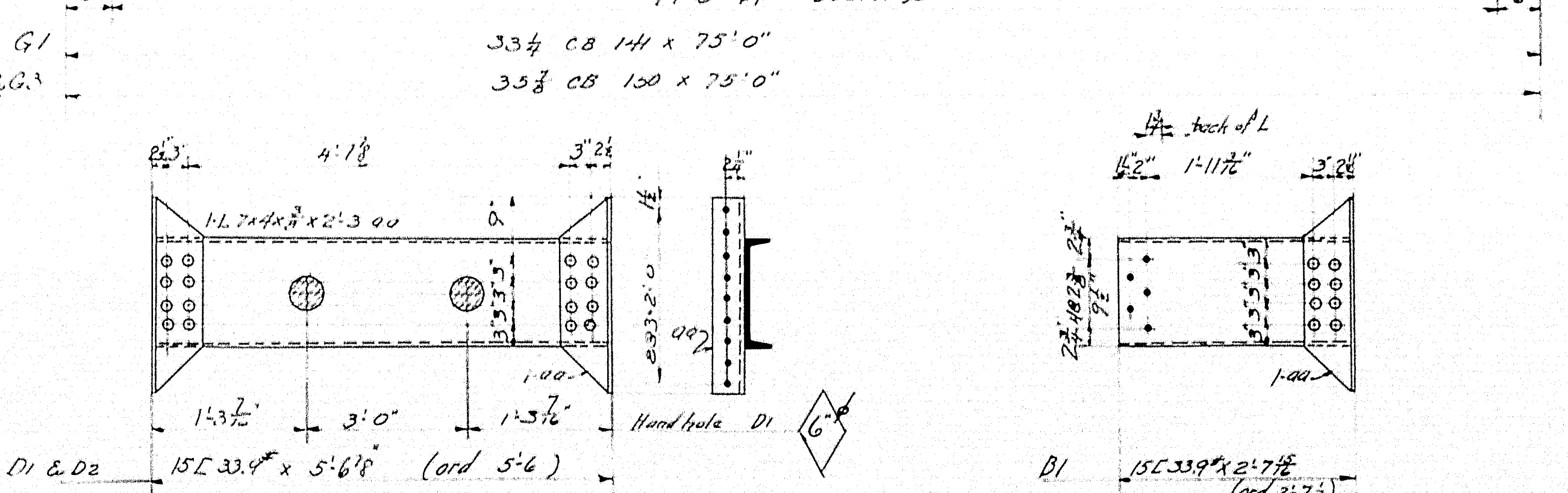
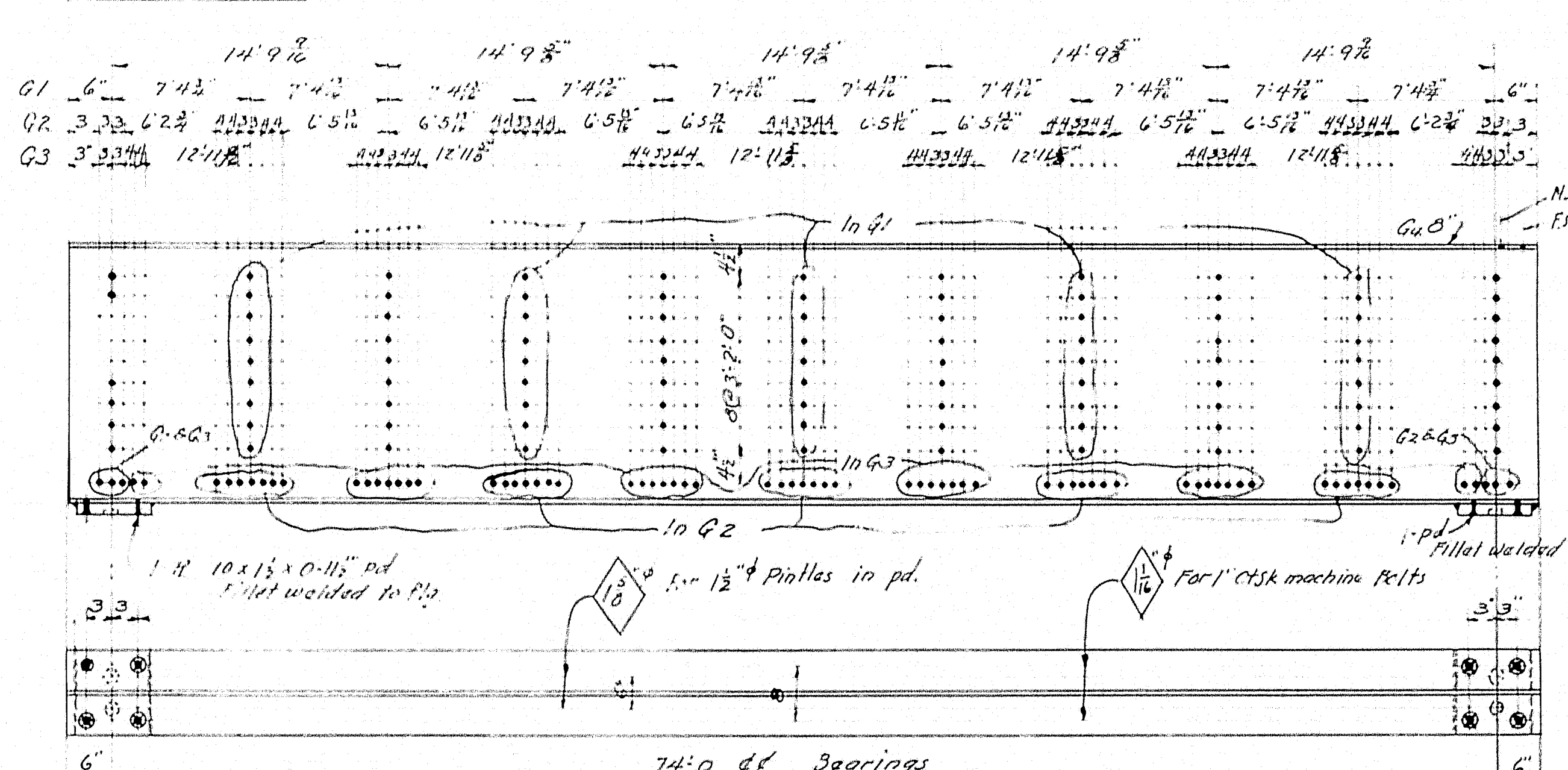
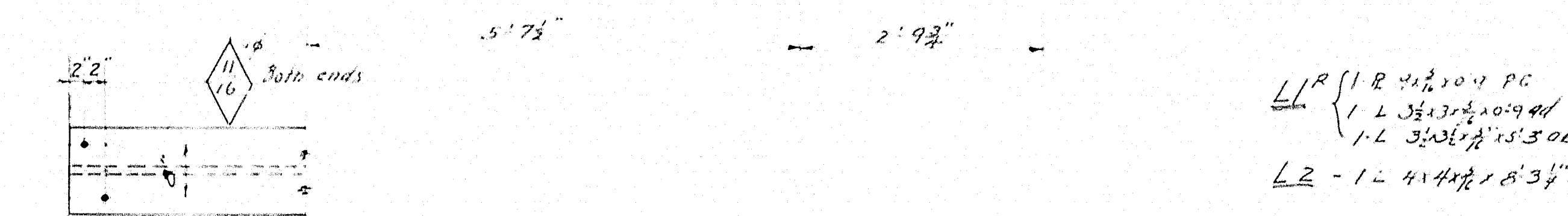
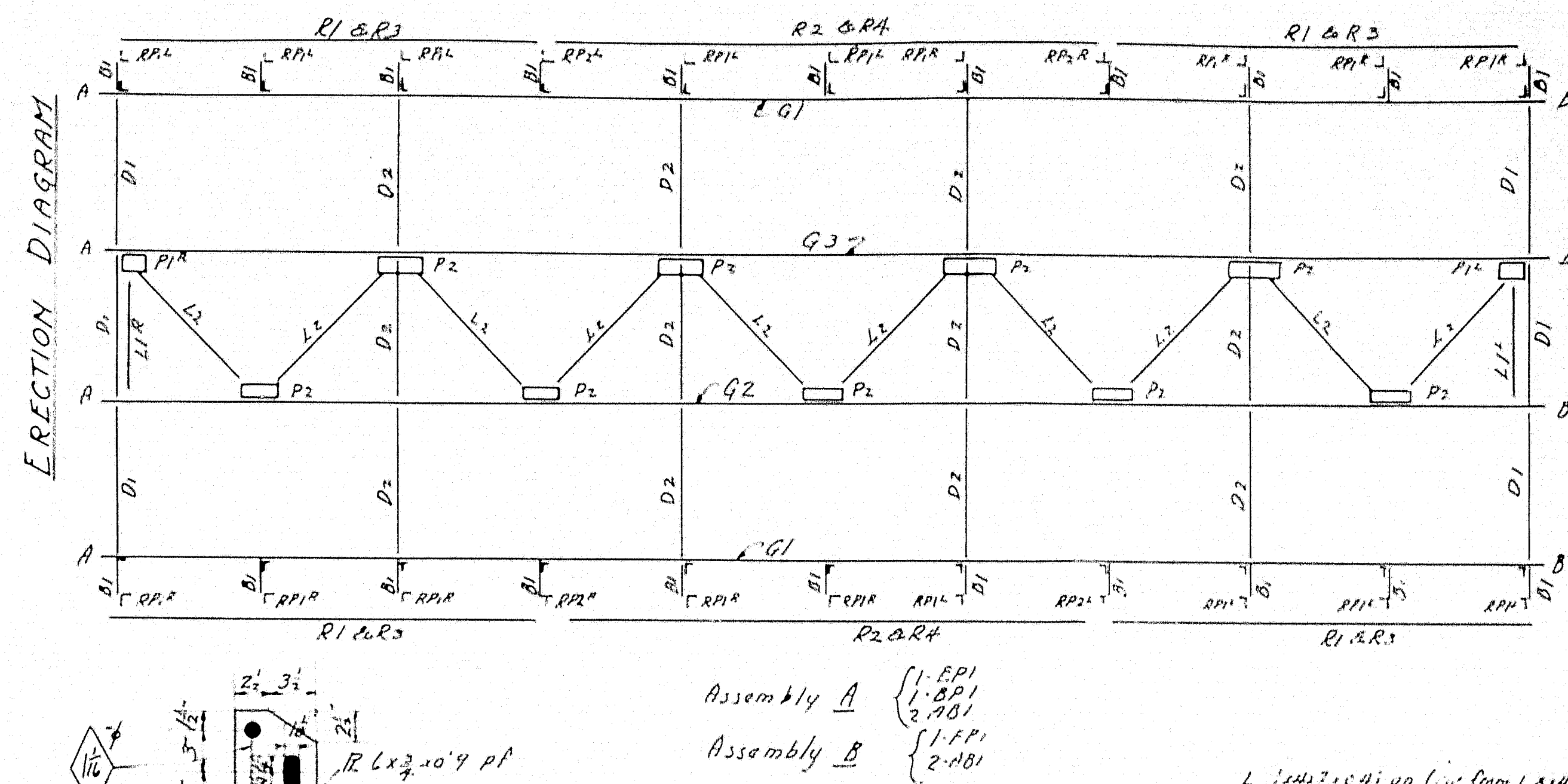
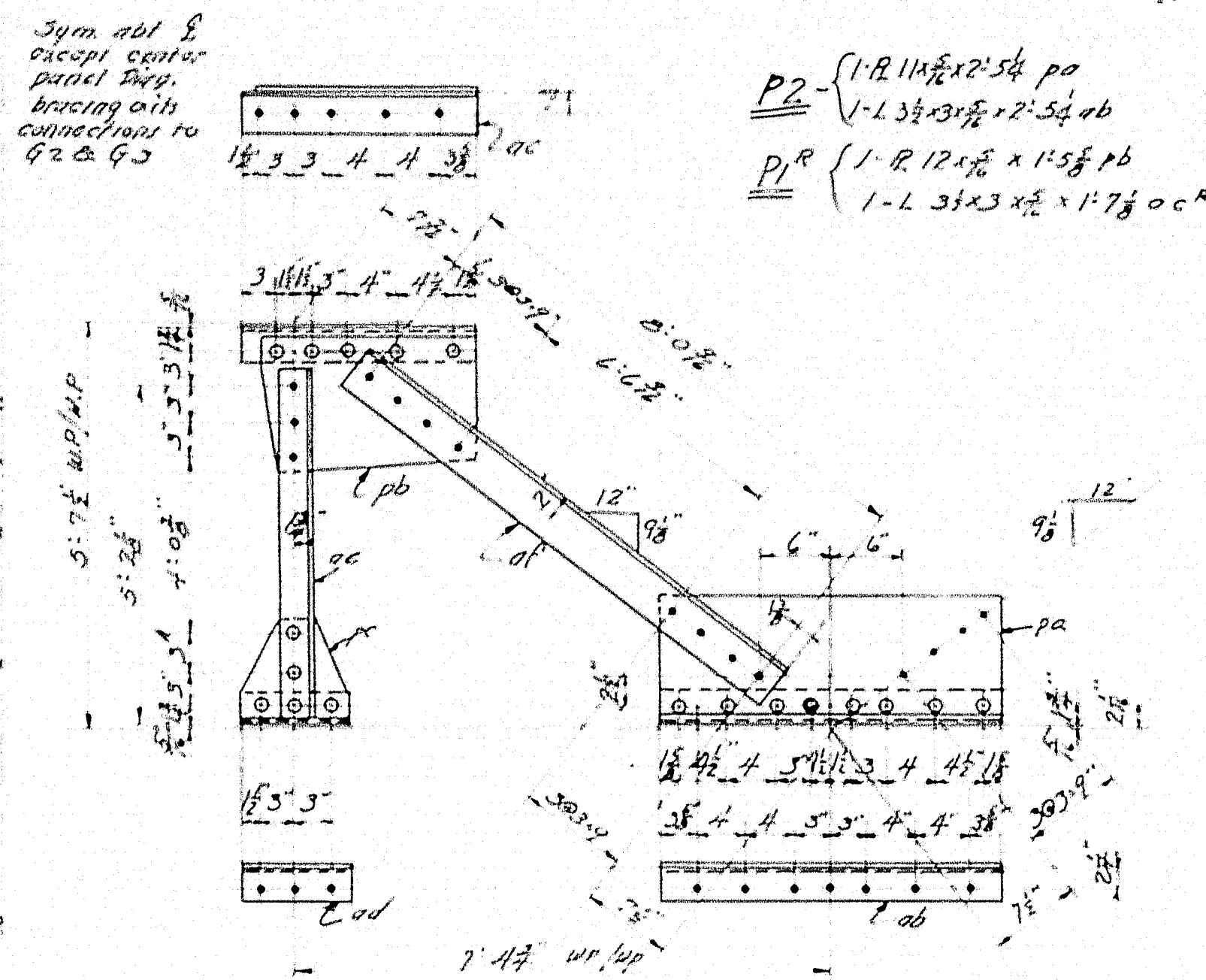
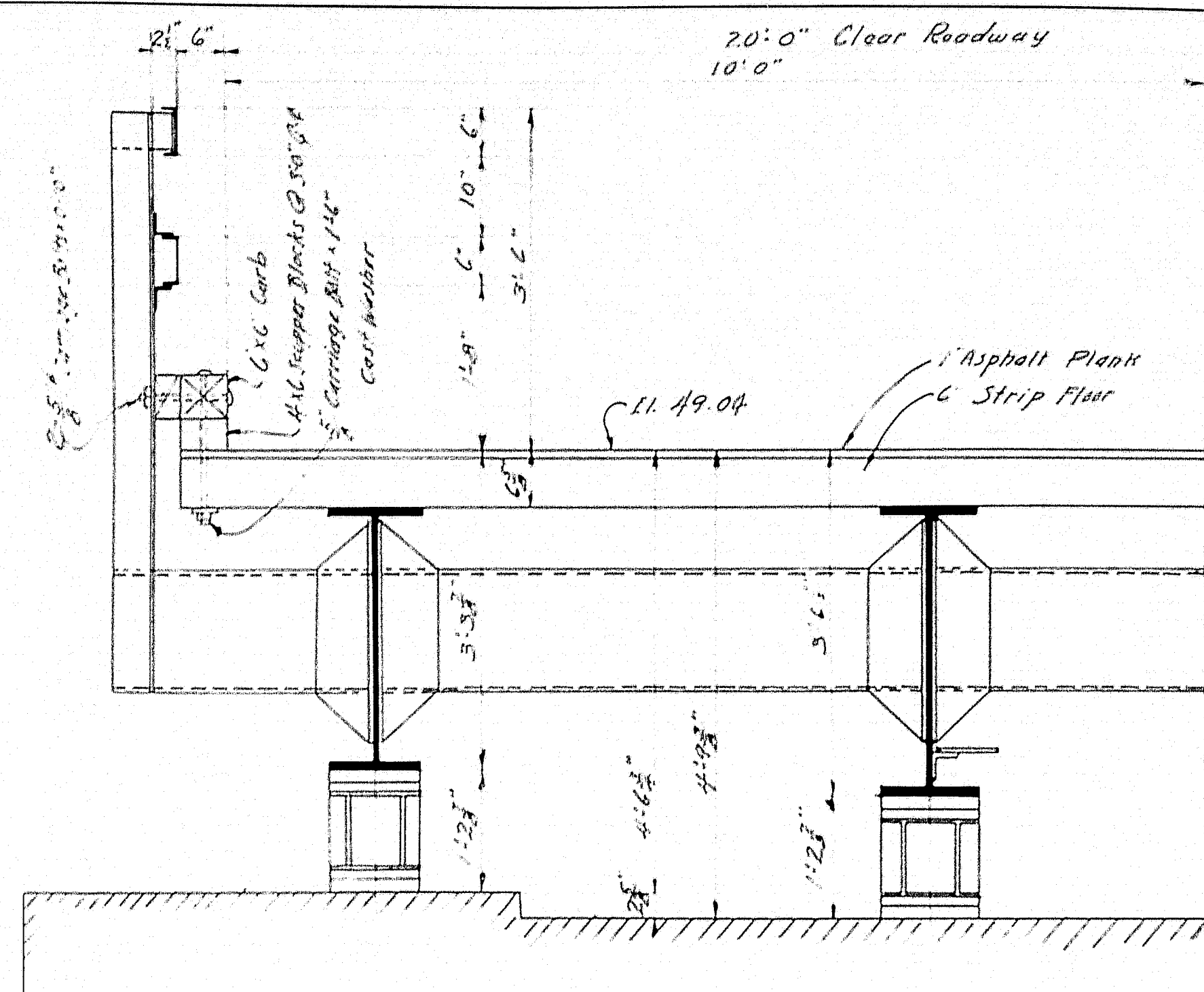
STEEL SCHEDULE

Mark	Size	No	Length	Location
J1	2"	26	22'-9"	Abut. 1 & 2
J2	"	64	3'-8"	"
J3	"	32	7'-0"	"
J4	"	64	5'-6"	"
J5	"	64	6'-6"	"
J6	"	9	18'-0"	Abut. #1
J7	"	9	16'-6"	"
J8	"	36	15'-3"	Abut. #2
D1	3/4"	64	2'-0"	Abut. #1 & 2

All steel plain bars of structural grade.
All dimensions are to center of bars.
~ CONCRETE CLASSIFICATION ~
B = Substructure



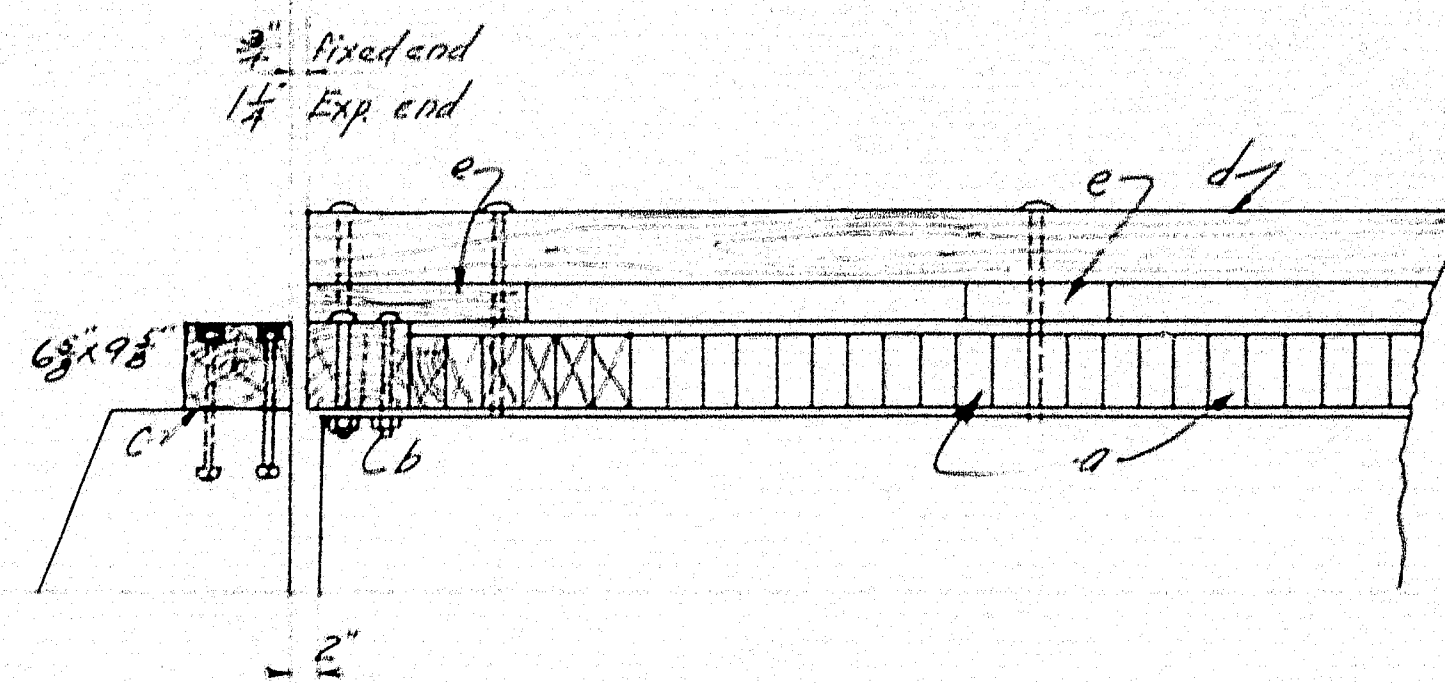
STATE HIGHWAY COMMISSION
BRIDGE DIVISION
LORD BRIDGE
OVER
MARSH STREAM
BETWEEN TOWNS OF
FRANKFORT & MOHRE
WALDO COUNTY
ABUTMENT PLANS
SHEET 2 OF 4 SHEETS AUGUSTA, MA, MAY 1936



REQUIRED					
No.	Description	Mark	No.	Description	Mark
2	Girder Bracing	G1	22	For 1" dia. machine bolts	B1
1	"	G2	4	"	R1
1	"	G3	2	"	R2
6	Diaphragm	D1	4	"	R3
12	"	D2	2	"	R4
1	Lateral Bracing	L1	9	For 1" dia. machine bolts	RP1R
1	"	L2	2	"	RP1L
10	"	L3	2	"	RP2R
1	"	L4	2	"	RP2L
4	Expansion Rockers	EP1			
4	Expansion Rockers	EP2			
16	Anchor Bolt Assembly	AB1			
4	Fixed Pedestal	FPI			

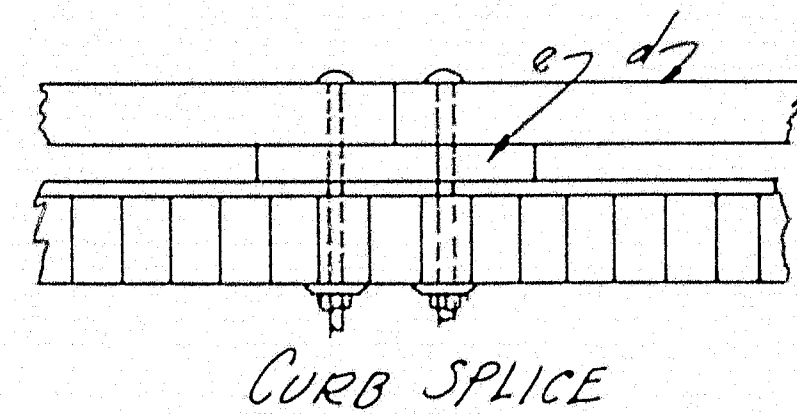
NOTE: All Rivets $\frac{3}{4}$ " unless noted, All holes $\frac{1}{2}$ " unless noted.
All field connections to be Bolted (A.M. Br. Co. or U.S. Standard Bolt/Nut)
Specification: Maine State Highway Commission - Steel Highway
Bridges Jan. 1936
Shop Paint: One coat Red Lead + Oil
Loading: H-15 + Impact

STATE HIGHWAY COMMISSION
BRIDGE DIVISION
LORD BRIDGE
OVER
MARSH STREAM
BETWEEN THE TOWNS OF
FRANKFORD & MONROE
WALDO COUNTY
STEEL DETAILS
SHEET 3 OF 4 SHEETS AUGUSTA, ME. MAY 1936

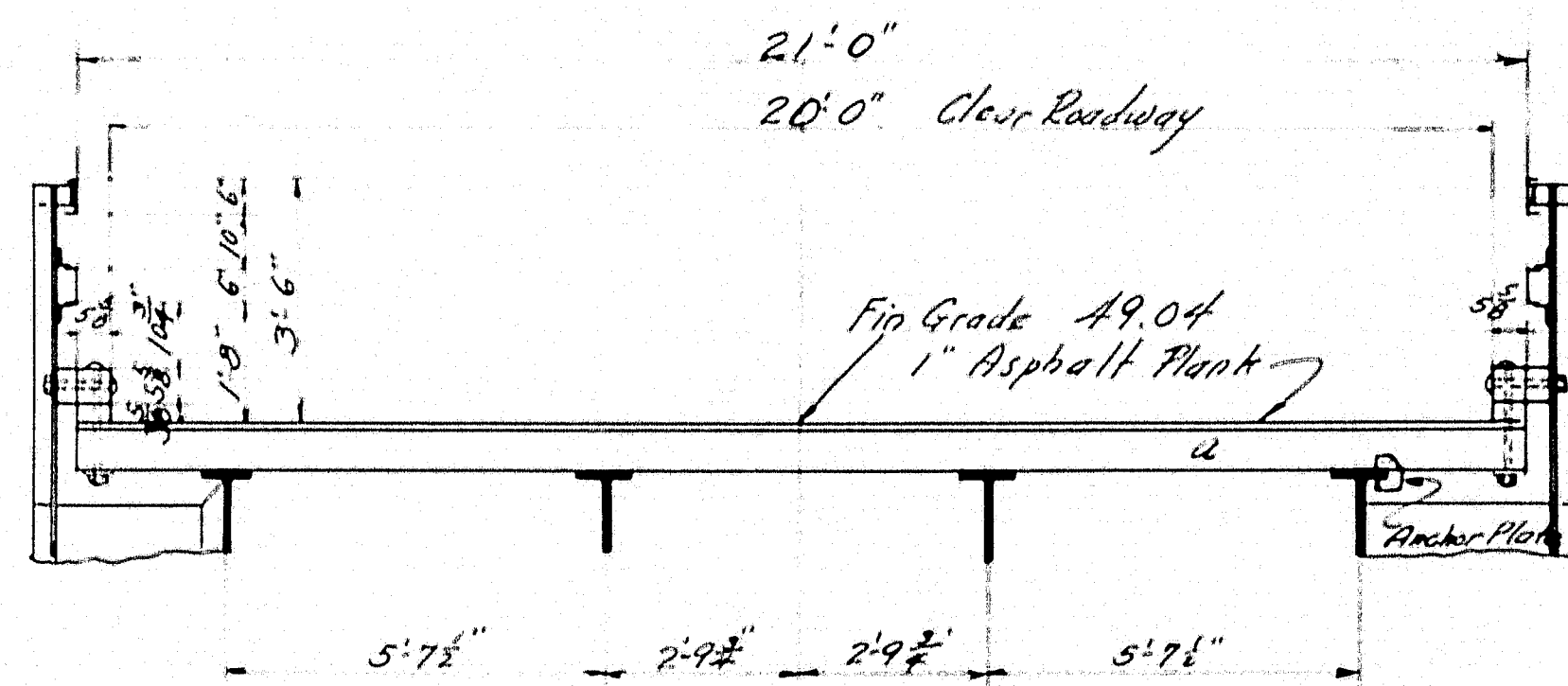


PART LONGITUDINAL SECTION

Scuppers: 2'-0" long at ends and curb joints, all others 1'-0"
Place scuppers at rail posts and at mid point between posts.



CURB SPLICE



TRANSVERSE SECTION

TIMBER SCHEDULE				
Mark	No	Tim Size	Length	Location
a	350	2 3/4" x 5 3/8"	21'-0"	Floor
b	2	6 3/4" x 9 5/8"	21'-0"	End timbers
c	2	"	20'-0"	Backwall timbers
d	-	5 1/2" x 5 3/8"	150'-4"	Curbs
e	-	3 1/2" x 5 3/8"	50'-0"	Scuppers
f	-	2 3/4" x 5 3/8"	11'-0"	Rail Post Blocks

1550 Sq Ft Asphalt Plank
475 Anchor Plates

BOLT SCHEDULE				
Kind	No	Size	Where	Location
Carriage	50	3/8" x 1'-6"	Cut	Curbs
"	44	3/8" x 1'-10"	Cut	Rail Posts
"	16	3/8" x 0'-8"	Cut	End Timbers
Nut	22	3/8" x 1'-2"	Cut	Backwall Timbers

Plan
Traced
Checked
E.B.
J.H.
W.H.

Town 14-03
Bridge 334-B

STATE HIGHWAY COMMISSION
BRIDGE DIVISION
LORD BRIDGE
OVER
MARSH STREAM
BETWEEN THE TOWNS OF
FRANKFORD AND MONROE
WALDO COUNTY
FLOOR DETAILS

SHEET 4 OF 4 SHEETS AUGUSTA, ME. MAY 1936

26-40

0 1 2 3 4 5 INCHES